

OLATHE, KANSAS

AL-5687 (FAA)

# LOC RWY 36

OLATHE/JOHNSON COUNTY EXECUTIVE (OJC)

LOC I-PKX <b>108.3</b>	APP CRS <b>356°</b>	Rwy Idg <b>4098</b>
		TDZE <b>1085</b>
		Apt Elev <b>1096</b>

▼  
▲ NA

\* MCI VORTAC feeder course is a flight check value.  
For inoperative MALSR, increase S-36 Cats A/B/C visibility to 1 mile.

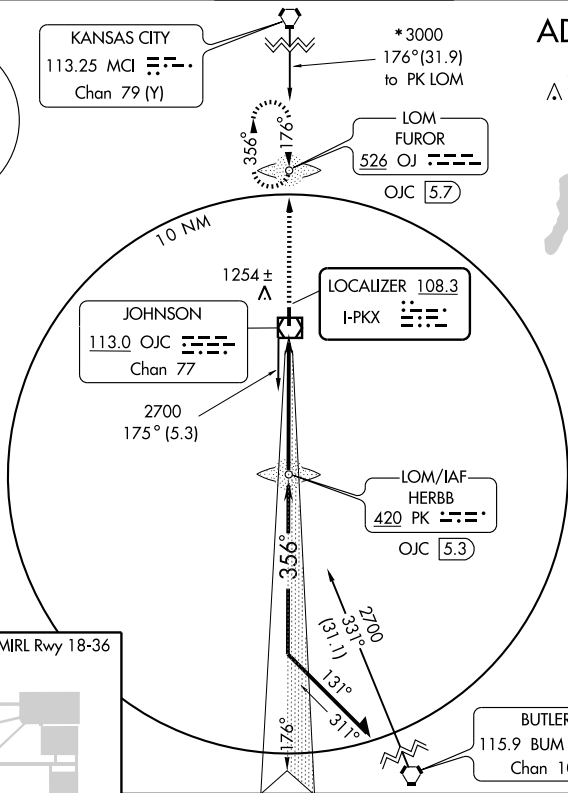
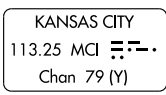
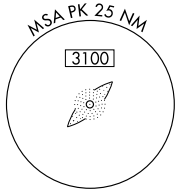
MALSR  
AS

MISSED APPROACH: Climb to 2700 direct FUROR LOM/OJC 5.7 DME and hold.

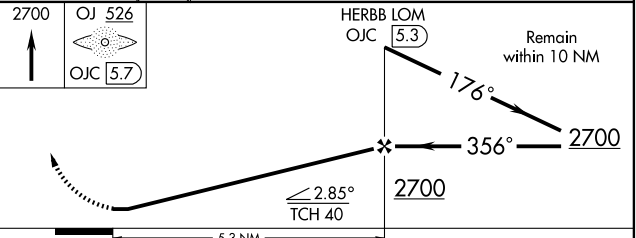
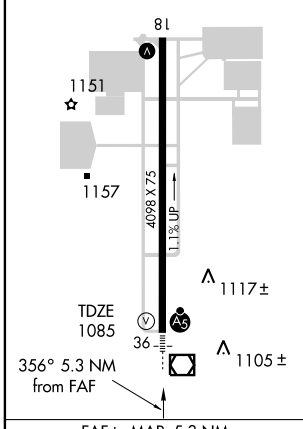
ATIS <b>119.35</b>	KANSAS CITY APP CON <b>118.9 294.7</b>	EXECUTIVE TOWER* <b>126.0 (CTAF) 0 225.4</b>	GND CON <b>121.6</b>	UNICOM <b>122.95</b>
-----------------------	---	---	-------------------------	-------------------------

ADF REQUIRED

▲ 2049



ELEV 1096 MIRL Rwy 18-36



CATEGORY	A	B	C	D
S-36	1480-¾	395 (400-¾)		NA
CIRCLING	1540-1 444 (500-1)	1560-1 464 (500-1)	1560-1½ 464 (500-1½)	NA

OLATHE, KANSAS  
Amdt 1 08269

OLATHE/JOHNSON COUNTY EXECUTIVE (OJC)  
38°51' N-94°44' W  
**LOC RWY 36**

NC-2, 07 MAY 2009 to 04 JUN 2009

NC-2, 07 MAY 2009 to 04 JUN 2009